

Absolute encoders - SSI

Shaft max. $\varnothing 8$ mm

Magnetic single- or multiturn encoders 12 bit ST / 13 bit MT

BMSV 30, BMMV 30 SSI - MAGRES



BMMV 30 SSI with shaft

Features

- Mini encoder single- or multiturn / SSI
- Magnetic sensing
- Resolution: singleturn 12 bit, multiturn 13 bit
- Housing $\varnothing 30$ mm
- High resistance to shock and vibrations
- Reset input

Technical data - electrical ratings

Voltage supply	5 VDC ± 10 % 10...30 VDC
Consumption w/o load (typ.)	100 mA (5 VDC) 50 mA (24 VDC)
Initializing time (typ.)	70 ms after power on
Interface	SSI
Steps per turn	4096 / 12 bit
Absolute accuracy	$\pm 1^\circ$
Sensing method	Magnetic
Code	Gray or binary
Code sequence	CW: ascending values with clockwise sense of rotation (looking at flange)
Inputs	SSI clock Reset input
Output circuit	SSI data: linedriver RS485
Interference immunity	DIN EN 61000-6-2
Emitted interference	DIN EN 61000-6-3
Approval	UL approval / E217823
BMSV 30	
Function	Singleturn
BMMV 30	
Function	Multiturn
Number of turns	8192 / 13 bit

Technical data - mechanical design

Housing	$\varnothing 30$ mm
Shaft	$\varnothing 5$ mm $\varnothing 6$ mm $\varnothing 8$ mm
Protection DIN EN 60529	IP 65
Operating speed	≤ 6000 rpm
Operating torque typ.	0.0075 Nm
Admitted shaft load	≤ 10 N axial ≤ 10 N radial
Materials	Housing: steel Flange: aluminium
Operating temperature	-20...+85 °C
Relative humidity	95 %
Resistance	DIN EN 60068-2-6 Vibration 30 g, 10-2000 Hz DIN EN 60068-2-27 Shock 500 g, 6 ms
Connection	Connector M12, 5-pin Cable 1 m

BMSV 30

Weight approx. 60 g

BMMV 30

Weight approx. 70 g

Absolute encoders - SSI

Shaft max. ø8 mm

Magnetic single- or multiturn encoders 12 bit ST / 13 bit MT

BMSV 30, BMMV 30 SSI - MAGRES

Part number

Singleturn

BMSV 30S1 12/00

Connection
 4 Cable 1 m, axial
 5 Cable 1 m, radial
 T Connector M12, axial
 N Connector M12, radial

Shaft
 C5 ø5 mm, IP 65
 C6 ø6 mm, IP 65
 C8 ø8 mm, IP 65

Resolution
 12/00 12 bit singleturn

Voltage supply / signals
 05C 5 VDC / SSI
 24C 10...30 VDC / SSI

Code
 G Gray code
 N Binary code

Multiturn

BMMV 30S1 12/13

Connection
 4 Cable 1 m, axial
 5 Cable 1 m, radial
 T Connector M12, axial
 N Connector M12, radial

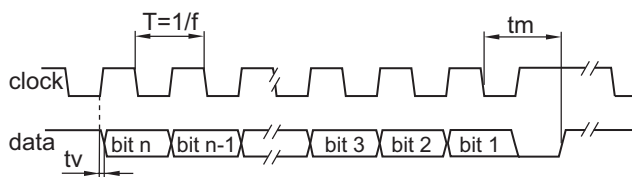
Shaft
 C5 ø5 mm, IP 65
 C6 ø6 mm, IP 65
 C8 ø8 mm, IP 65

Resolution
 12/13 12/13 bit single-/multiturn

Voltage supply / signals
 05C 5 VDC / SSI
 24C 10...30 VDC / SSI

Code
 N Binary code
 G Gray code

Data transfer



Clock frequency f	100...1000 kHz
Scan ratio of T	40...60 %
Time lag tv	200 ns
Monoflop time tm	20 µs + T/2

Accessories

Connectors and cables

10146775	Female connector M12, 8-pin, straight
10127844	Female connector M12, 8-pin, straight, shielded, 2 m
10129332	Female connector M12, 8-pin, straight, shielded, 5 m cable

Mounting accessories

10106004	Clamp set
----------	-----------

Absolute encoders - SSI

Shaft max. $\varnothing 8$ mm

Magnetic single- or multturn encoders 12 bit ST / 13 bit MT

BMSV 30, BMMV 30 SSI - MAGRES

Terminal significance

+Vs	Encoder supply voltage.
0 V	Encoder ground connection relating to +Vs.
Data+	Positive, serial data output of differential linedriver.
Data-	Negative, serial data output of differential linedriver.
Clock+	Positive SSI clock input. Clock+ together with Clock- forms a current loop. A current of approx. 7 mA towards Clock+ input means logic 1 in positive logic.
Clock-	Negative SSI clock input. Clock- together with Clock+ forms a current loop. A current of approx. 7 mA towards Clock- input means logic 0 in positive logic.
Zero	Input for setting a zero point anywhere within the encoder resolution. The zero setting operation is triggered by a Low impulse. Connect to +Vs after setting operation for maximum interference immunity. Impulse duration > 2 ms.
Rot. direction	Ascending position values when looking at the flange and rotating the shaft clockwise.

Trigger level

Control inputs	Input circuit
Input level Low	<0,4 V (>2 ms)
Input level High	+Vs or open

Terminal assignment

Cable

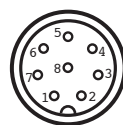
for connection references **-4** and **-5**

Core colour	Signals	Description
brown	+Vs	Supply voltage
white	0 V	Supply voltage
grey	Data+	Data signal
pink	Data-	Data signal
green	Clock+	Clock signal
yellow	Clock-	Clock signal
blue	Zero	Zero setting input
red	d.u.	do not use
Screen	connected to housing	
Cable data		8 x 0.14 mm ²

Connector M12 male

for connection reference **-N** and **-T**

Connector	Signals	Description
Pin 1	0 V	Supply voltage
Pin 2	+Vs	Supply voltage
Pin 3	Clock+	Clock signal
Pin 4	Clock-	Clock signal
Pin 5	Data+	Data signal
Pin 6	Data-	Data signal
Pin 7	Zero	Zero setting input
Pin 8	d.u.	do not use



Absolute encoders - SSI

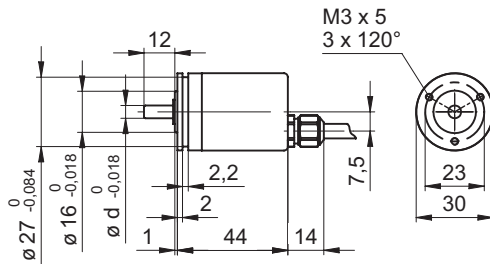
Shaft max. $\varnothing 8$ mm

Magnetic single- or multiturn encoders 12 bit ST / 13 bit MT

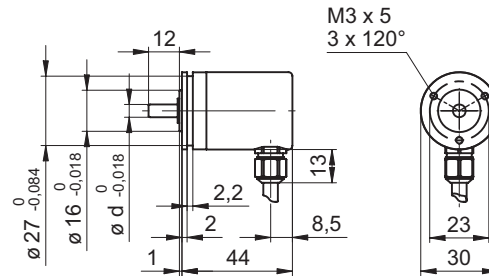
BMSV 30, BMMV 30 SSI - MAGRES

Dimensions

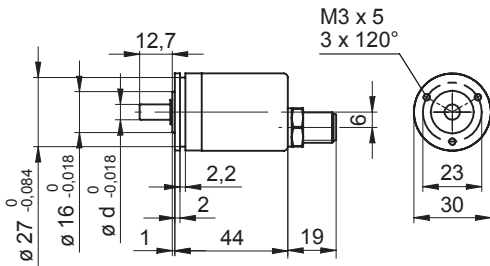
BMSV/BMMV 30 SSI, cable axial



BMSV/BMMV 30 SSI, cable radial



BMSV/BMMV 30 SSI, connector axial



BMSV/BMMV 30 SSI, connector radial

